



Co-financed by the European Regional Development Fund

Inspire Policy Making with Territorial Evidence

ESPON BRIDGES

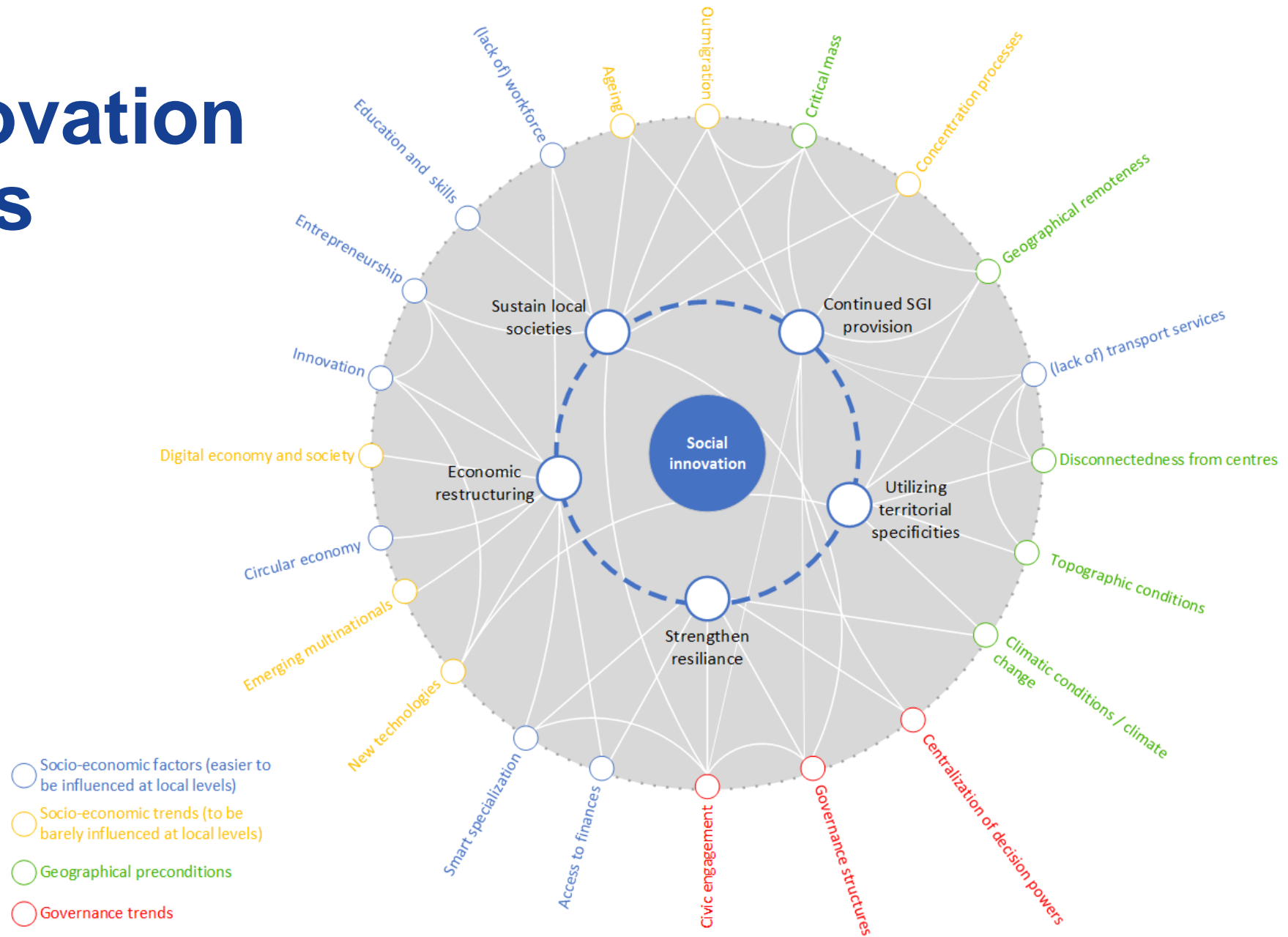
Key findings on innovation

Erik Gløersen, Spatial Foresight

Euromontana conference, 20th November 2019

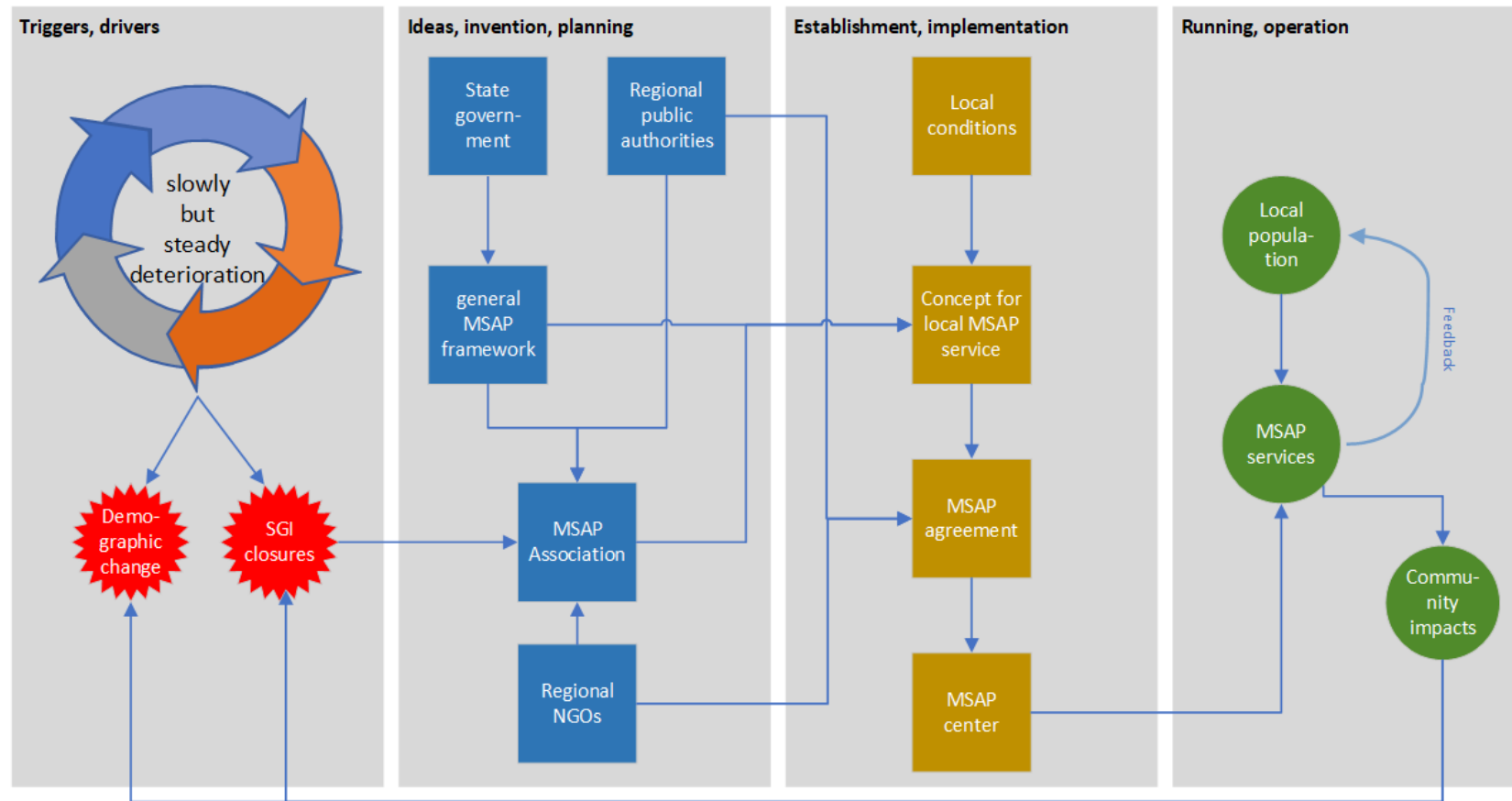
Rethinking territorial balances between urban and rural areas in the European Mountains:
How can innovation support win-win solutions?

Social innovation dimensions



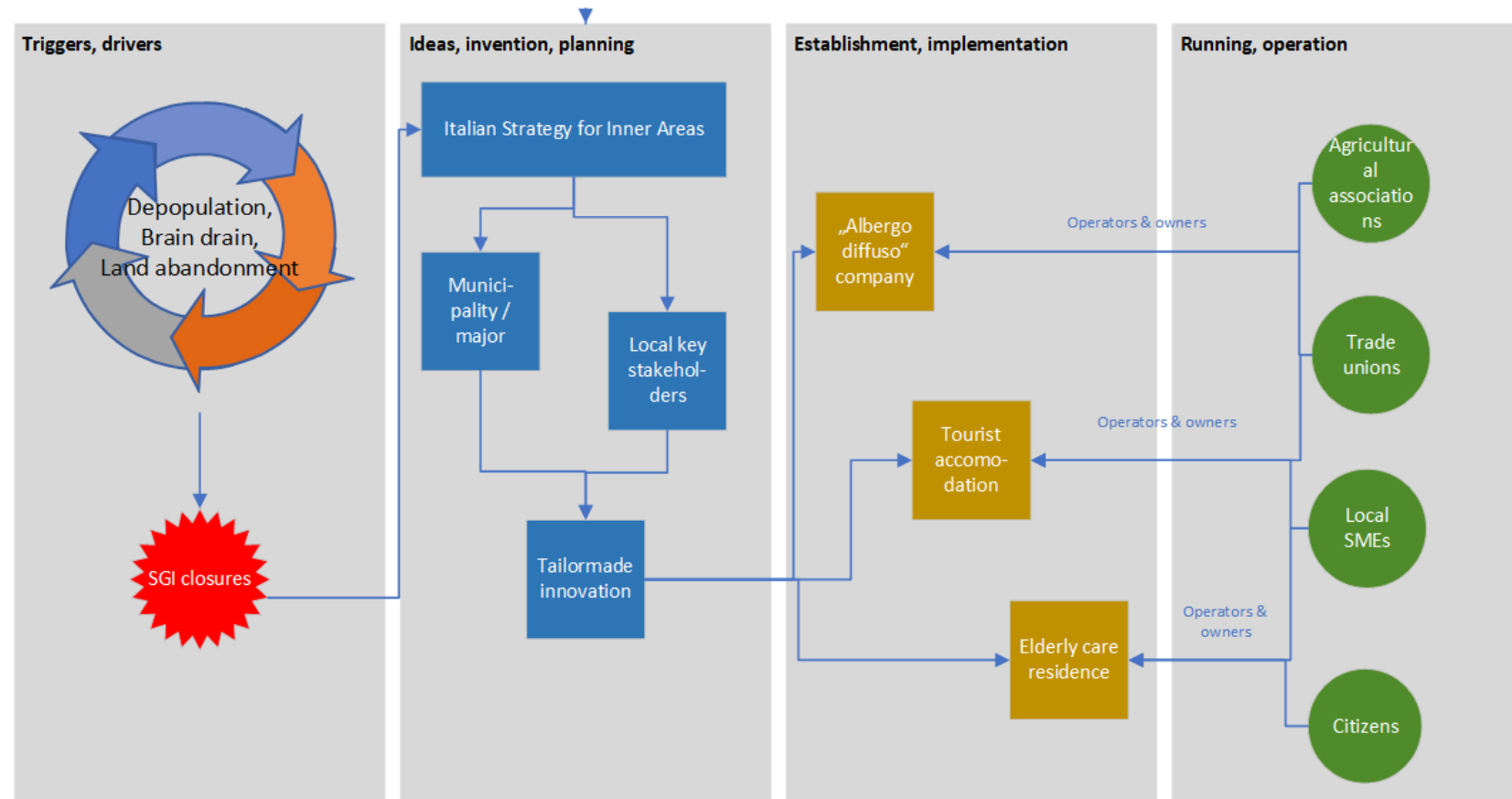
Framework for the assessment of social innovation initiatives

- Inland of Côte d'Azur (FR)
- Maisons des services au public (MSAP)
- Top-down social innovation



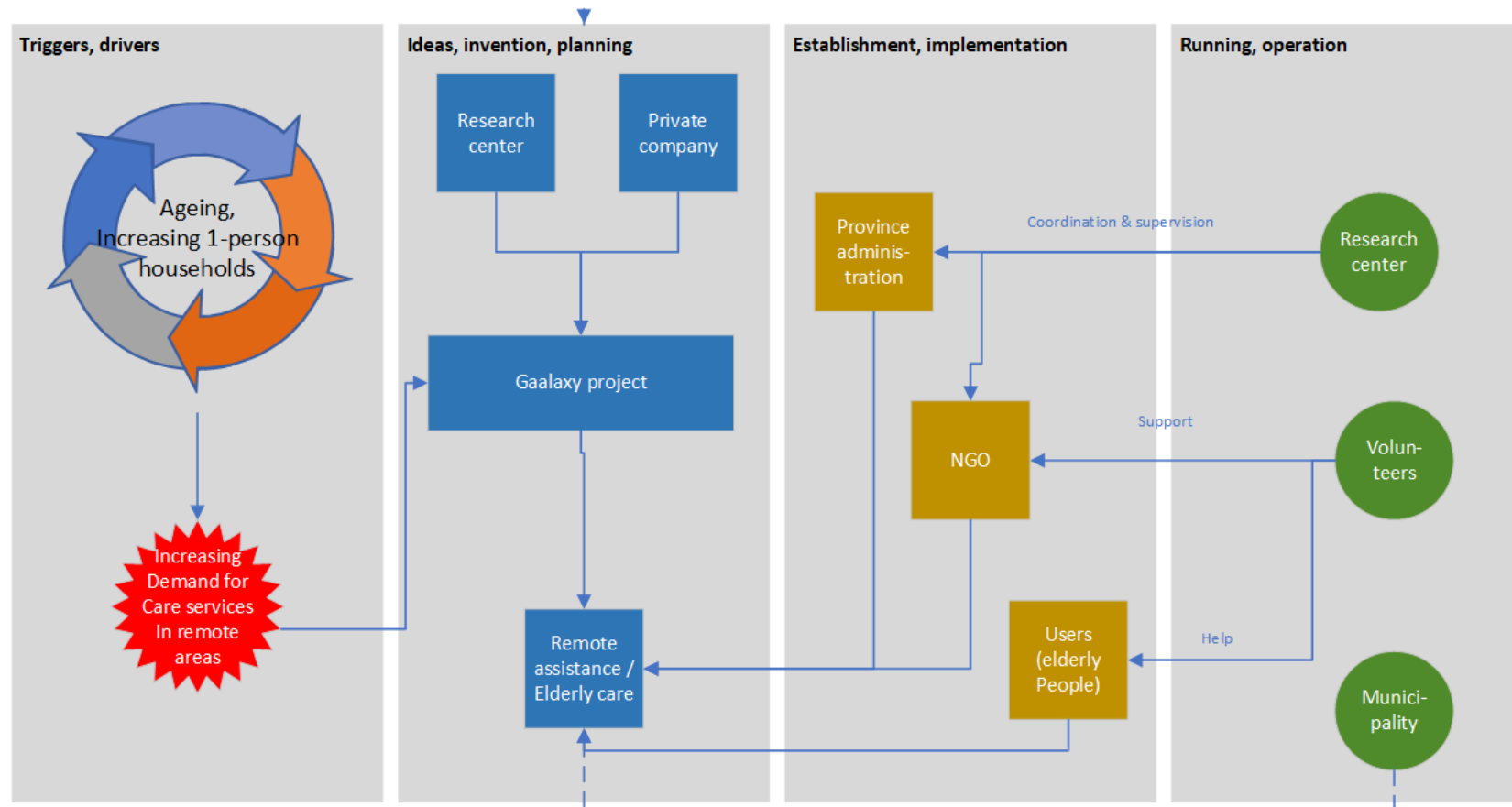
Framework for the assessment of social innovation initiatives

- Isernia (IT)
- Strategy for Inner Areas
- Top-down social innovation



Framework for the assessment of social innovation initiatives

- South Tyrol (IT)
- Gaalaxy project
- Bottom-up social innovation involving local administration



Critical factors for technological innovation

- Network relations between knowledge creators and users
- Knowledge absorption capacity of firms
- Entrepreneurial state of mind
- Number of skilled entrepreneurs
- Capacity to counter brain drain
- Openness to change
- ICT access
- Usage of ICT

Specificity of mountain innovation processes

- High profile
- Industrial traditions
- Small communities
- Challenges in service-provision
- Specific vulnerabilities

Challenges and opportunities

- Innovation needs are specific
- Regional smart specialisation strategies fail to reflect the specific challenges and opportunities of mountain areas
- Building on local entrepreneurial traditions
- Quality of living environment as a lever to attract talents

Policy perspectives

- Identifying innovation bottlenecks precisely
 - Infrastructure, usage, skills, attitudes, institutional frameworks
- Building mountain innovation networks
 - Sub-regional, cross-border or transnational
- Policies targeting flows of talents and workers
 - Transitional labour markets
- Better integrating social and technological innovation
 - Innovation centred on the specific needs and aspirations of mountain communities



Co-financed by the European Regional Development Fund

Inspire Policy Making with Territorial Evidence

// Thank you

Erik Gløersen, Spatial Foresight

erik.gloersen@spatialforesight.eu