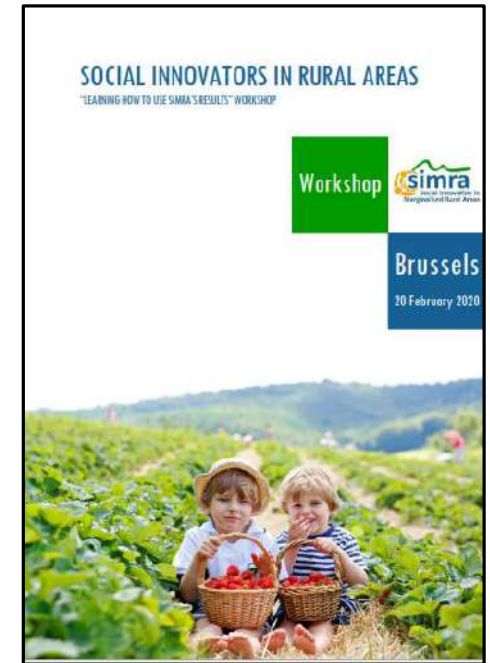


Social Innovation in Marginalised Rural Areas

(SIMRA)

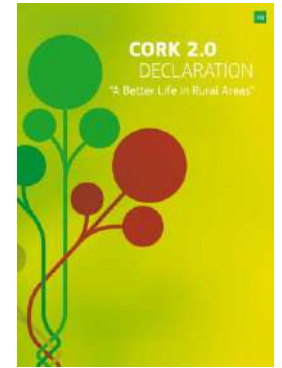
David Miller and Maria Nijnik
James Hutton Institute



International and European Contexts



Long-term vision for Rural Europe



<p>Dubravka Šuica, VP Democracy and Demography</p> <p><i>I would like you to coordinate the work on a long-term vision for rural areas.</i></p> <p><i>We need to enable them to make the most of their potential and support them in facing up to their own unique set of issues, from demographic change to connectivity, the risk of poverty and limited access to services. This should be done in close consultation with people living in rural areas, as well as local and regional authorities.</i></p>	<p>Janusz Wojciechowski, Agriculture</p> <p><i>You will develop a new long-term vision for rural areas, working closely with the Vice-President for Democracy and Demography.</i></p> <p><i>You will ensure that the needs of rural areas are specifically catered for in national Strategic Plans under the new Common Agricultural Policy.</i></p>	<p>Elisa Ferreira, Cohesion and reforms</p> <p><i>« Investment in local communities and infrastructure helps regions to catch up and reduces geographical disparities »</i></p> <p><i>« Europe invests and supports the regions and the people most affected by the twin digital and climate transitions, leaving no one behind as we move forward together. »</i></p> <p><i>« You should also contribute to the long-term vision on rural areas »</i></p>
---	---	---

THE 9 CAP OBJECTIVES



- How can **social innovation** contribute to addressing **societal challenges**?
- What **policy frameworks** can help social innovation?



1. Out-migration and ageing
2. Population drift to larger villages and towns
 - ➔ Closure of services
 - ➔ Threatening capacity for endogenous development
3. Diversification and restructuring
4. Changing infrastructure
5. Changing lifestyles
6. Climate change



To create opportunities and address challenges:

Support small businesses and entrepreneurs (new business models); local/ short food supply chains; infrastructure and services; valorising ecosystem services; bio-economy; exploit green and blue spaces; digitalisation and growth; new collaborative actions – **Social Innovation**



Overarching Aim:

To understand and enhance **Social Innovation** in Marginalised Rural Areas ...

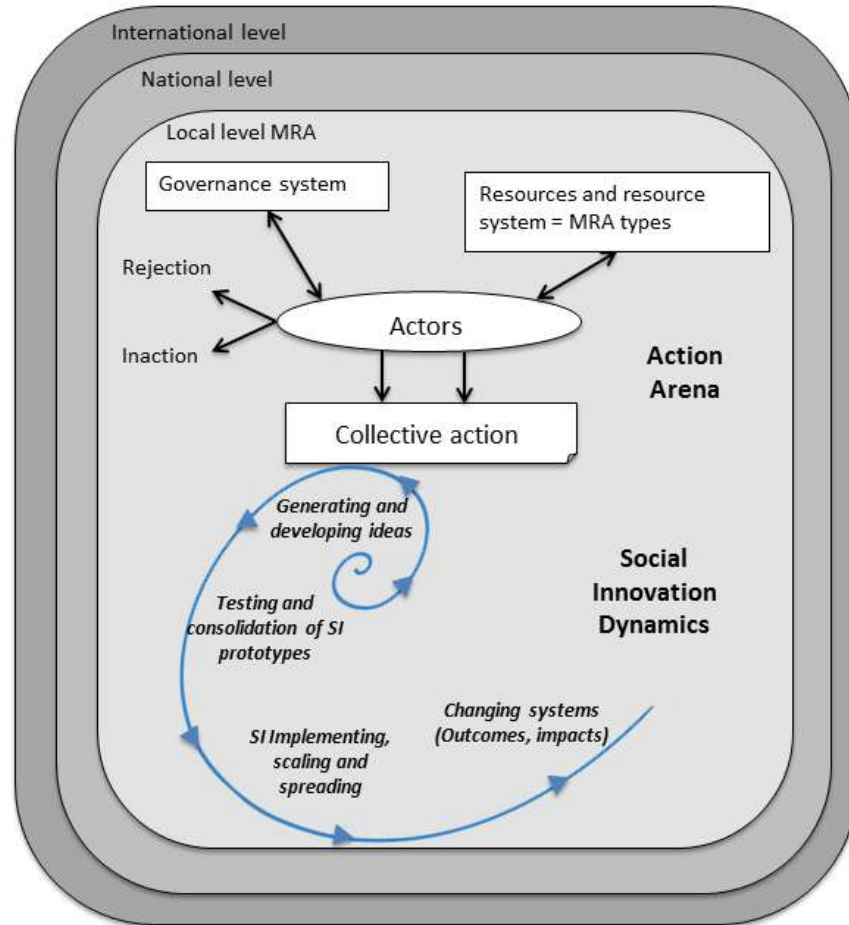
- By advancing **state-of-the-art** in Social Innovation and associated governance mechanisms in agriculture, forestry and rural development
- With a particular focus on the **Mediterranean region**

- **Research and Innovation**
- **Action project**
- **Funded by EU Horizon 2020**
- **26 partners**
- **14 countries**
- **4 years (2016 to 2020)**

“The **reconfiguring** of social practices, in response to **societal challenges**, which seeks to enhance outcomes on **societal well-being** and **necessarily includes** the engagement of **civil society actors**”. (Polman *et al.*, 2017)

... Social innovation incorporates new **ideas, products, services, modes, arrangements, relationships, interactions** (attitudes, collaborations, values, behaviours, skills, practices), **fields of activity** (social entrepreneurship and social enterprises), and **processes** to meet societal needs (e.g. learning), in particular in marginalised rural areas

The **Social Innovation** development process captured in a **framework** (Kluvankova *et al.*, 2018)



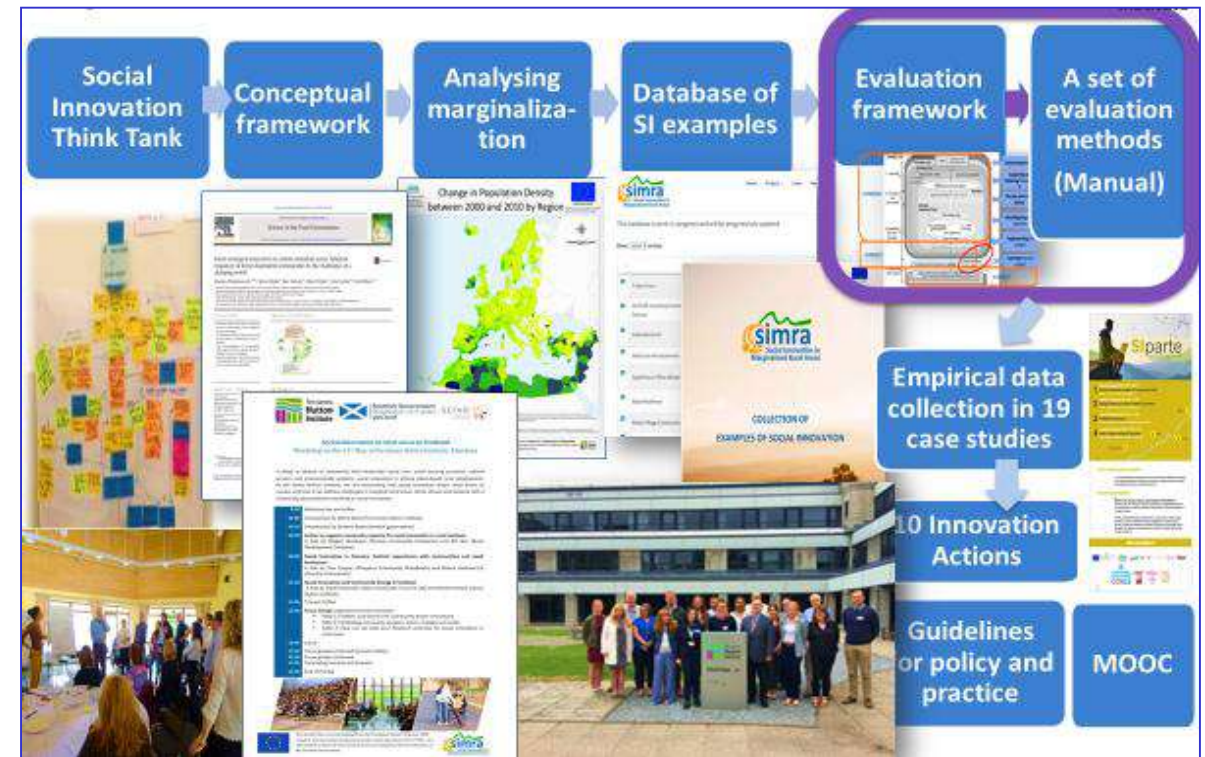
- **Working with stakeholders** at international, European, regional and local levels
- **Multi-level multi-actor** engagement is core to our science process
- **Evaluating decisions and co-constructing** common, more sustainable futures



- To **evaluate** Social Innovation and its impacts

Innovations

- The **co-constructed process** to develop, test and validate
- **Integrate qualitative and quantitative tools**
- Include **modern issues** related to the evaluation of Rural Development, e.g. **social capital, networking, governance** (Secco *et al.*, 2019)



Co-learning with practitioners, policy and researchers

Case Studies: Insight and understanding

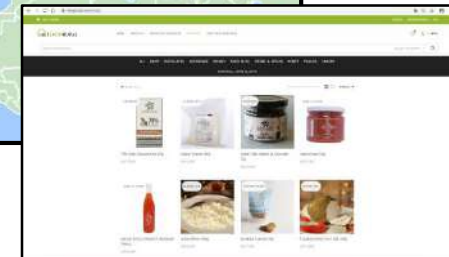


Innovation Actions: Facilitation and operationalising

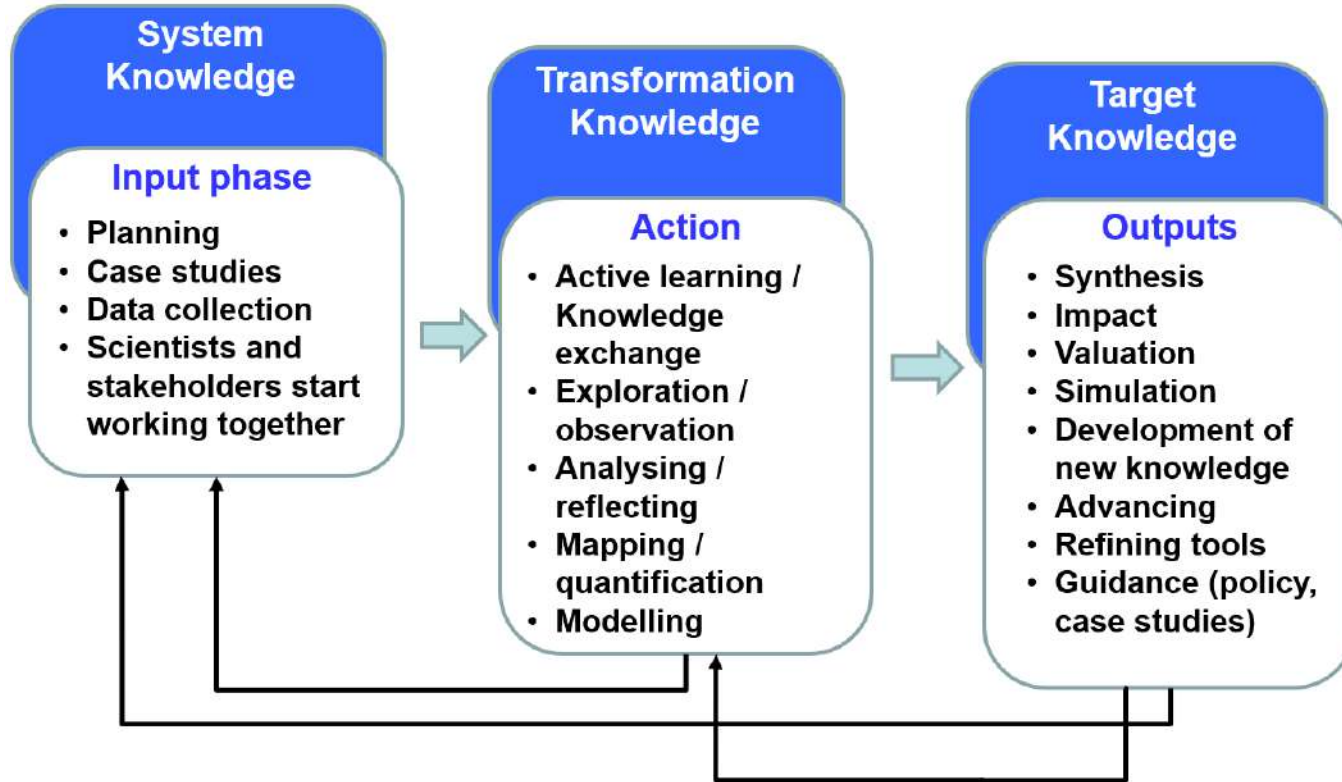


**For example: Reduce social
Environmental and economic risks**

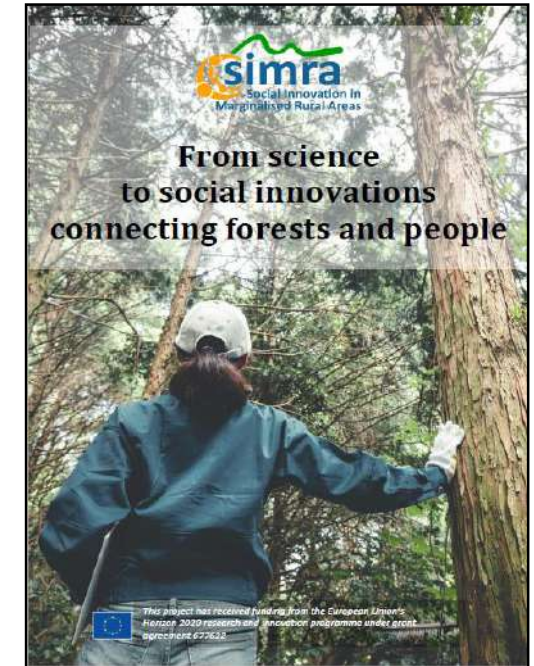
**e.g. Case Study - Forest Fire
Volunteers, Catalonia, Spain**



- **Capacities** for Social Innovation were built by bringing together scientists, businesses, governments and civil society



- Findings **validated** by end-users and peer reviewed scientific publications



Co-learning is core to **transdisciplinarity** and **SIMRA approach**

Local actors and research teams sharing experiences with actors at EU and international levels, and between places

- **Fostered collaborative working**
- **Emphasised shared experience**
- **Informs discussion**
- **Strengthens relationships**



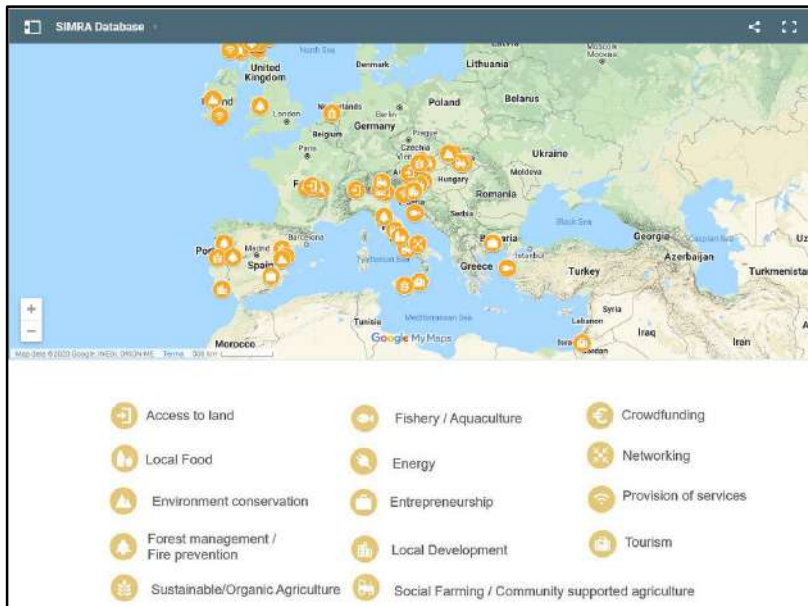

University of Padova
Social Innovation in Rural Areas
Explore applications of social innovation in rural areas and discover best practices for managing social innovation projects.
Starts 23 Mar 2020

Online training course



Participatory videos

Resources developed from transdisciplinary working providing insight to needs for evaluation, and practitioner experiences of social innovation



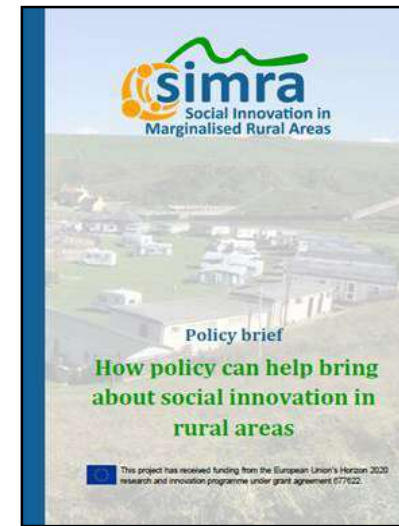
Developing database of examples of Social Innovation



Evaluation



Social Innovation on the ground



Recommendations for policy



Guide for practitioners

SIMRA Partnership Thanks You

